

**STYLE:** LABORAL LONG PANTS - DEXIBERICA G.

**DATE :** 29/12/23

**FABRICS COMPOSITION**

**98% COTTON TWILL 2% ELASTHAN**, GSM SAME AS DAILY STRETCH

**QUOTE:** 20007755

**SALES ORDER:**

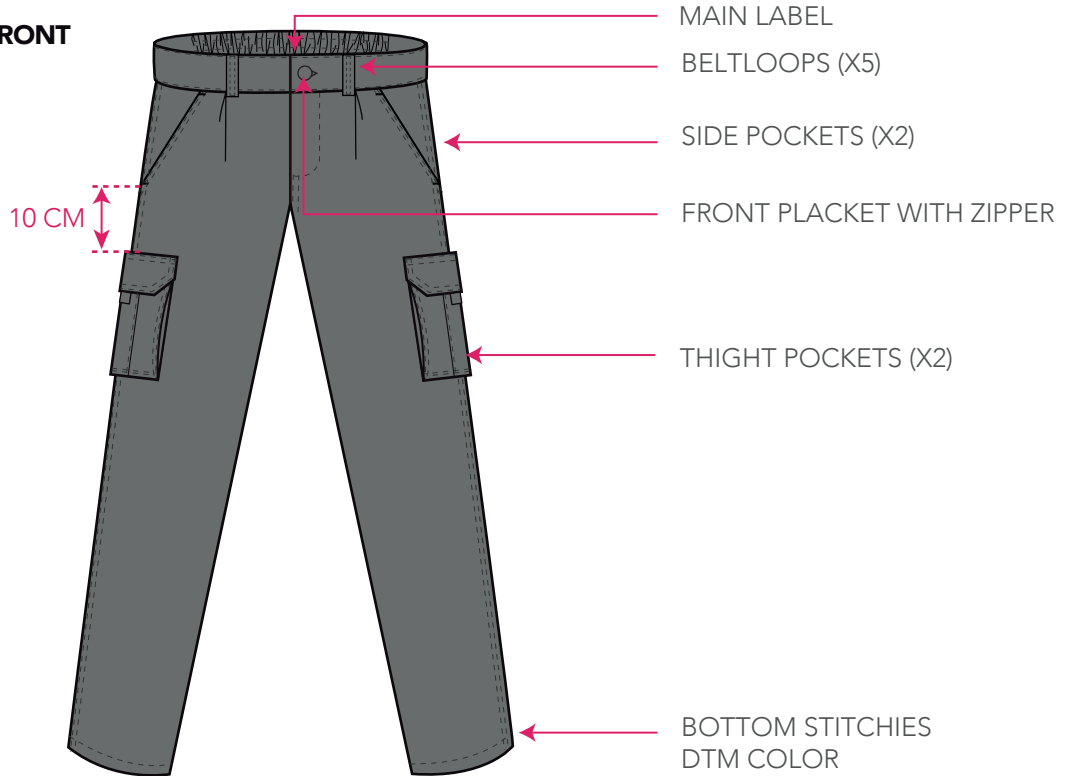
**COLORS:** LEAD COLOR

**SIZE:** 34 TO 60

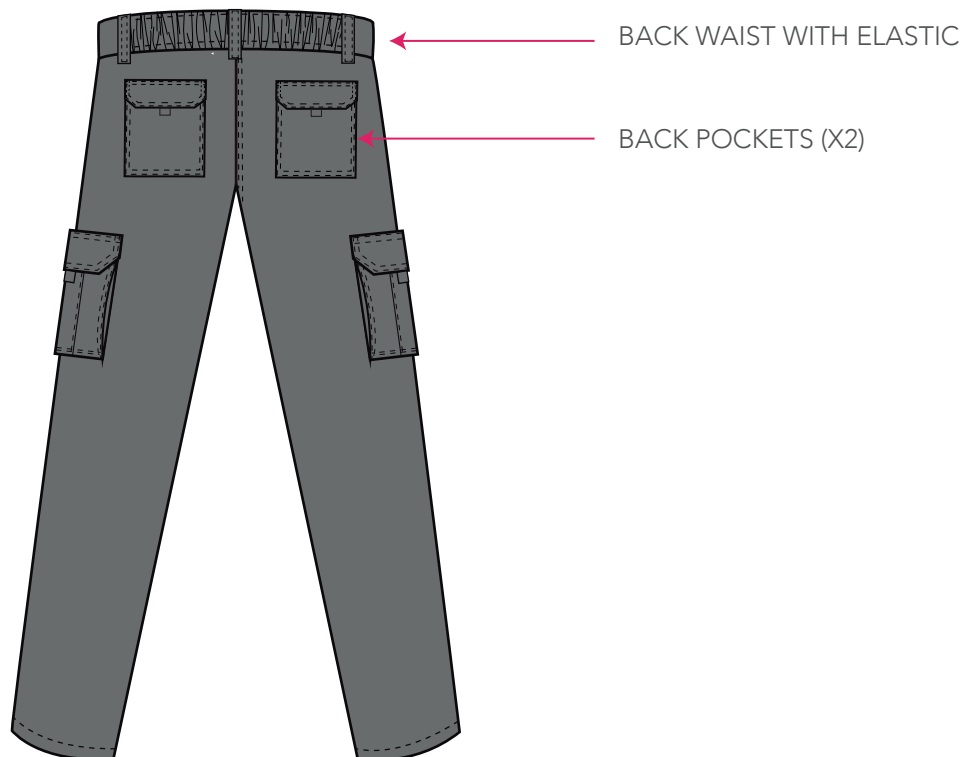
**PURCHASE ORDER:**

**OBSERVATIONS:** MEASUREMENT SAME AS DAILY STRETCH & QUALITY SAME AS CUSTOMER

**FRONT**



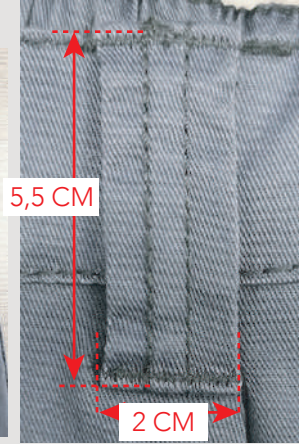
**BACK**



● LEAD (23)

### FRONT WAIST DETAILS

WITH ZIPPER & BELTLOOPS

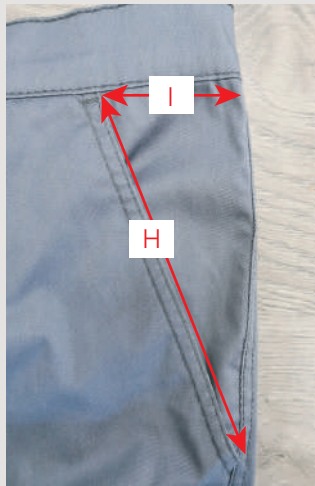


FRONT BELTLOOPS (X2)

PLASTIC BUTTON,  
DTM COLOR  
FRONT PLACKET WITH  
PLASTIC  
ZIPPER, DTM COLOR

### SIDE POCKETS (X2)

DTM COLOR

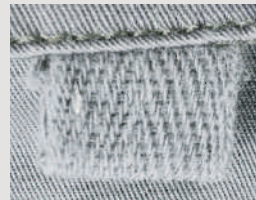
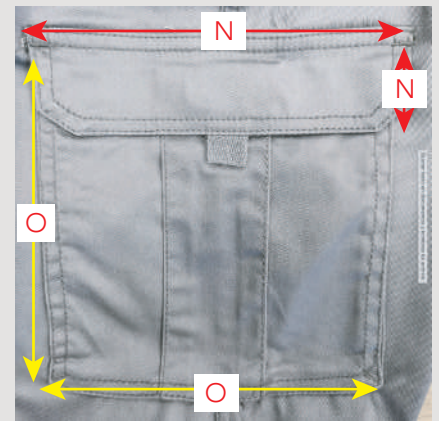


INSIDE SIDE POCKET  
LINING, WHITE  
POPLIN COLOR



### THIGHT POCKETS (X2)

DTM COLOR, WITH VELCRO



COTTON  
HERRINGBONE  
DTM COLOR

DEPTH 2,5 CM



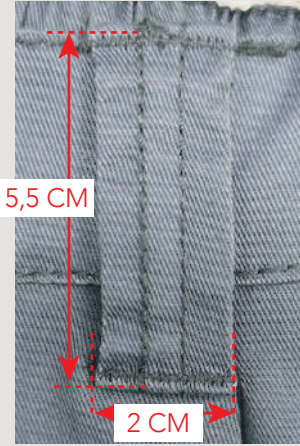
### BOTTOM STITCHES

DTM COLOR



### BACK WAIST DETAILS

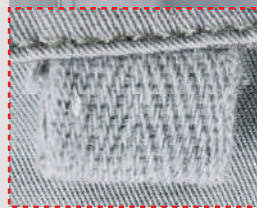
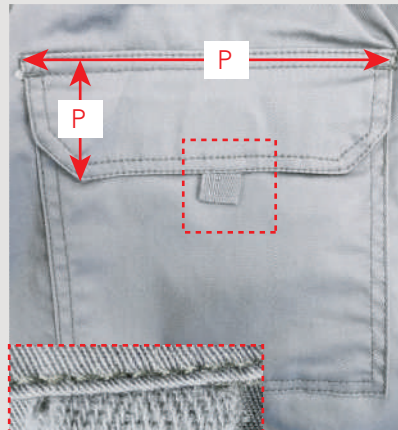
WITH ELASTIC & BELTLOOPS



FRONT BELTLOOPS (X3)

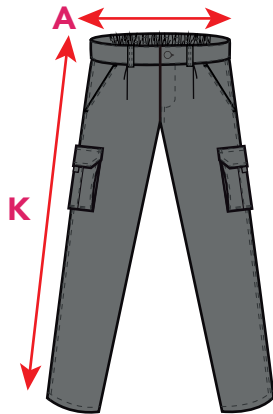
### BACK POCKETS (X2)

DTM COLOR, WITH VELCRO



COTTON  
HERRINGBONE  
DTM COLOR





**MEASUREMENT SAME AS DAILY STRETCH**

ADULTO/ADULT		34	36	38	40	42	44	46
<b>A</b>	HALF WAIST UNSTRETCHED	31	33	35	37	39	41	43
<b>B</b>	WAIST STRETCHED	40	42	44	46	48	50	52
<b>C</b>	FRONT RISE	26,5	27	27,5	28	28,5	29	29,5
<b>D</b>	BACK RISE INCLUDING W/B	37	37,5	38	38,5	39	39,5	40,5
<b>E</b>	HALF THIGH	29	30	31	32	32,5	33,5	34,5
<b>F</b>	HALF KNEE	21	21,5	22	22,5	23	24	24,5
<b>G</b>	LEG OPENING	18	18,5	19	19,5	20	20,5	21
<b>H</b>	SIDE POCKET LENGTH	18	18,5	19	19	19,5	19,5	20
<b>I</b>	SIDE POCKET WIDTH	5	5	5	5,5	5,5	6	6
<b>J</b>	THIGH POCKET DEPTH	2,5	2,5	2,5	2,5	2,5	2,5	2,5
<b>K</b>	TOTAL LENGTH INCLUDING W/B	105	105,5	106	106,5	107	107,5	108
<b>L</b>	HALF HIP 21CM BELOW W/B	49	50	52	54	56	58	60
<b>M</b>	WAISTBAND HEIGHT	4	4	4	4	4	4	4
<b>N</b>	THIGH POCKET placket	18X5	18X5	18X5	18X5	18X5	18X5	18X5
<b>O</b>	THIGH POCKET HEIGHT x WIDTH	17X17	17X17	17X17	17X17	17X17	17X17	17X17
<b>P</b>	BACK POCKET placket	16X6	16X6	16X6	16X6	16X6	16X6	16X6
<b>Q</b>	BACK POCKET HEIGHT x WIDTH	15X6	15X6	15x16	15x16	15x16	15x16	15x16
<b>R</b>	STITCHING LEG OPENING	1,5	1,5	1,5	1,5	1,5	1,5	1,5
<b>S</b>	THIGH POCKET PLACEMENT	10	10	10	10	10	10	10

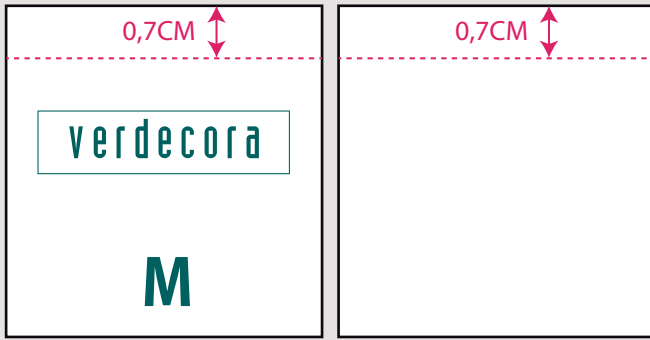
ADULTO/ADULT		48	50	52	54	56	58	60
<b>A</b>	HALF WAIST UNSTRETCHED	45	47	49	51	53	55	57
<b>B</b>	WAIST STRETCHED	54	56	58	60	62	64	66
<b>C</b>	FRONT RISE	30	30,5	31	32	32,5	33	33,5
<b>D</b>	BACK RISE INCLUDING W/B	41	42,5	43	44	45	45,5	46
<b>E</b>	HALF THIGH	35,5	36,5	38,5	39,5	40,5	41,5	42,5
<b>F</b>	HALF KNEE	25,5	26	27	27,5	28,5	29	30
<b>G</b>	LEG OPENING	21,5	22	22,5	23	23,5	24	24,5
<b>H</b>	SIDE POCKET LENGTH	20	20,5	20,5	21	21	21,5	21,5
<b>I</b>	SIDE POCKET WIDTH	6	6	6,5	6,5	6,5	6,5	7
<b>J</b>	THIGH POCKET DEPTH	2,5	2,5	2,5	2,5	2,5	2,5	2,5
<b>K</b>	TOTAL LENGTH INCLUDING W/B	108,5	109	109,5	110	110	110	110
<b>L</b>	HALF HIP 21CM BELOW W/B	62	64	66	68	70	72	74
<b>M</b>	WAISTBAND HEIGHT	4	4	4	4	4	4	4
<b>N</b>	THIGH POCKET placket	18X5	19X5	19X5	19X5	19X5	19X5	19X5
<b>O</b>	THIGH POCKET HEIGHT x WIDTH	17X17	18x18	18x18	18x18	18x18	18x18	18x18
<b>P</b>	BACK POCKET placket	16X6	17X6	17X6	17X6	17X6	17X6	17X6
<b>Q</b>	BACK POCKET HEIGHT x WIDTH	15x16	16x17	16x17	16x17	16x17	16x17	16x17
<b>R</b>	STITCHING LEG OPENING	1,5	1,5	1,5	1,5	1,5	1,5	1,5
<b>S</b>	THIGH POCKET PLACEMENT	10	10	10	10	10	10	10

### MAIN LABEL BACK WAIST POSITION

**PANTONE 323 C**

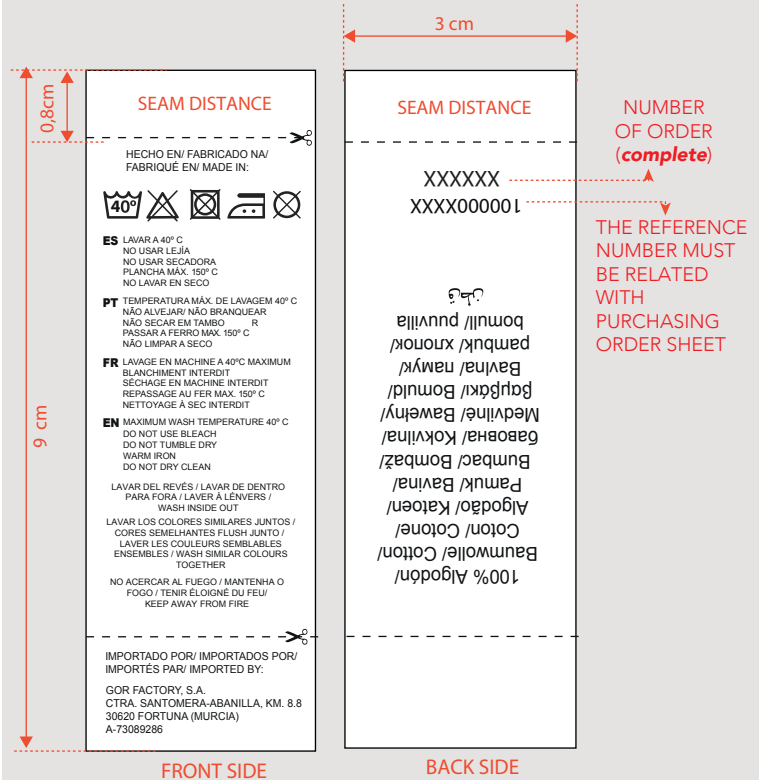
FRONT

BACK

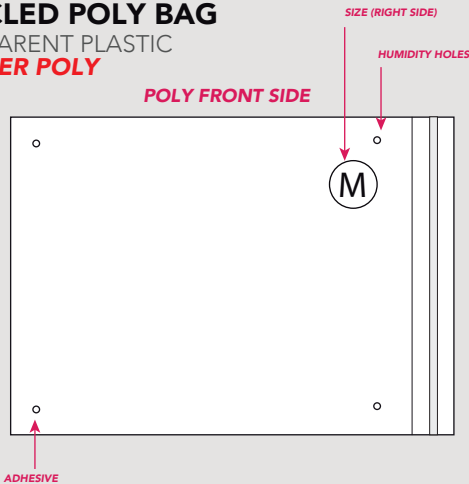


### CARE LABEL

INSIDE LEFT POSITION, *pending define design & quality*



### RECYCLED POLY BAG TRANSPARENT PLASTIC 1 PCS PER POLY



### SILICA GEL

YOU MUST INCLUDE ONE SILICA GEL INSIDE EACH POLY BAG



### BACK PRINT OBLIGATORY LOGOS



THIS BAG IS **100% RECYCLED**  
AND **100% RECYCLABLE**

### FOLDING INSTRUCCIONS



STEP 1



STEP 2



STEP 3

**PACKAGING**  
25 PCS PER BOX

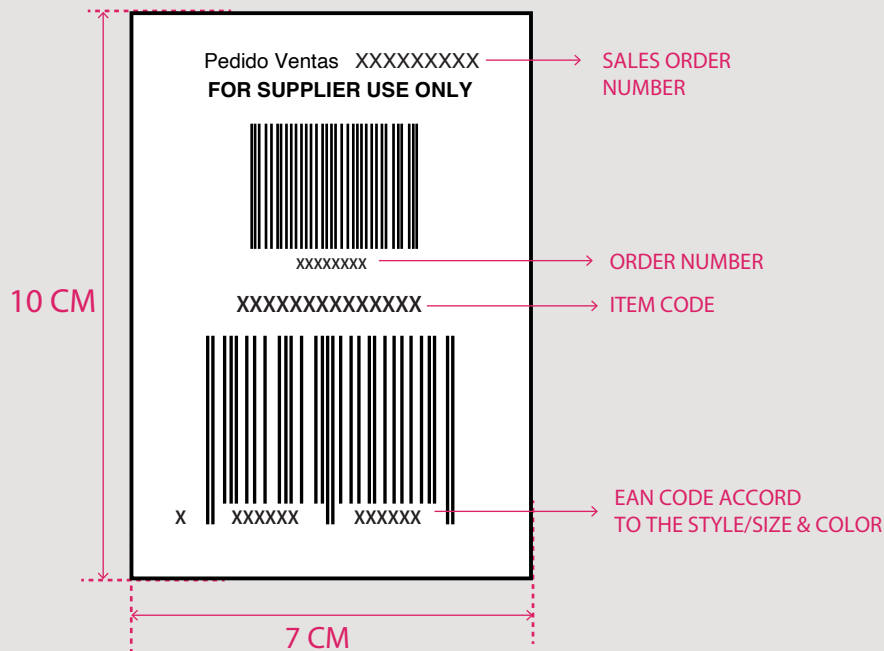


ONE FACE CHART INFORMATION, THE OTHER FACE WITH STICKER

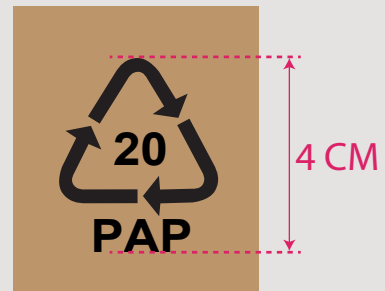


**INTERNAL BARCODE BOX STICKER**

**EXAMPLE**



**OBLIGATORY SYMBOL OF CORRUGATED BOARD (IN TWO FACES OF BOX)**



REVISION 01	DATE: 19/12/23
-REMOVED TIGHT POCKET LOGO	
REVISION 02	DATE: 29/12/23
-CHANGE COMPOSOTION (Now same as customer order) -ADD DESIGN FOR MAIN LABEL	
REVISION 03	DATE:
REVISION 04	DATE:
REVISION 05	DATE:
REVISION 06	DATE:
REVISION 07	DATE:
REVISION 08	DATE:
REVISION 09	DATE: